



GREETINGS FLORIDA CASE MEMBERS,

*"AUTUMN IS AN AWESOME SEASON. THE LEAVES ARE ALL FALLING,
AND THEY'RE FALLING LIKE THEY'RE FALLING IN LOVE WITH THE
GROUND."*



**PLEASE JOIN ME IN WELCOMING OUR
NEW NATIONAL CASE MEMBERS:**

Emily Crews- University of Florida

Phyllis Frederic- Sarasota School District, Oak Park School

Amanda Keel- Hillsborough County, Lopez Exceptional Center

Leigh Austin- ESE Director, Orange County Schools

Kim Dotts-Hoehnle- Assistant Principal, Sidney Lanier Schools-
Alachua County School District

Latonia Green- ESE Director, Orange County Schools

Beverly Knestrick- ESE Director, Orange County Schools

Lynda Langa- ESE Director, Orange County Schools

Nancy Lewis- ESE Director, Orange County Schools

Joumana Moukaddam- ESE Director, Orange County Schools

Kimberly Steinke- ESE Senior Director, Orange County Schools

We are so delighted that you have joined your
professional organization!

Please visit our website at www.flocase.org where you will find a wealth
of information😊



DR. LANDIS M. STETLER

EDUCATIONAL LEADERSHIP SCHOLARSHIP

In honor of Dr. Landis Stetler, Florida first ESE Bureau Chief, Dr. Poinsetta Tillman and I had the honor of recognizing and awarding on behalf of our organization, Ms Kathleen Randolph, Doctoral student at Florida Atlantic University a \$3,000 educational scholarship. Kathleen is pursuing her doctorate in Exceptional Student Education. Kathleen's internship during her junior year in an ESE Center-based school for students with severe and profound exceptionalities made a profound impact on her life and the teachers influence her decision to pursue a graduate degree in Special Education. While pursuing her master's degree, she was hired as a paraprofessional working in a resource room with students with mild disabilities in a middle school. Kathleen is now in her last year of her studies and her program requires full- time enrollment. She shares that this scholarship will assist her greatly as she completes her doctorate program.

Kathleen has served as an assistant to the co-chairs for the Ted Education Division (TED) during their annual conference and have presented at numerous educational conferences. She recently

participated in the CEC Child Advocacy networking training and campaigning on Capitol Hill on behalf of students with disabilities.

Poinsetta and I had the opportunity to talk with Kathleen and without a doubt; she is passionate about serving students with disabilities and providing support to teachers during their pre-service studies so that they are more prepared to work with our students. Kathleen is mother of three (3) daughters and is honored to receive this prestigious award.

Please join me in congratulating Ms Kathleen Randolph!



NEWS FROM YOUR LEGISLATION AND BYLAWS CHAIR

On Thursday, October 1, 2015, Dr. Hall, Dr. Tillman, and I participated in the annual meeting of the Coalition for Education of Exceptional Children, now reorganized as the **Committee for Education of Exceptional Children (CEES)**.

CEES is a coalition of parent and professional organizations who share a common concern for improving educational opportunities for exceptional students in the State of Florida. Florida CASE has been a very active member of this coalition for many years and this year we have taken on a leadership role in reorganizing this group that will now be referred to as a **committee**

During the meeting in Orlando, the CEES group worked out the details for “reorganization” and developed a DRAFT document for the 2016 Legislative Platform. This document, when finalized, will guide our presentations during meetings with State Legislators at the Capitol in Tallahassee during the Spring 2016 Legislative Session.

Please consider joining us on Monday, February 1 – Tuesday, February 2, 2016 for our Spring 2016 Legislative Session in Tallahassee. We are moving forward to secure several rooms at one of the hotels at a special conference rate. Stay tuned for an important email message from me with the details and deadlines for this event.

If you have questions or are interested in joining us for the 2016 Legislative Session in Tallahassee, please email me at bjvalerie77@gmail.com.

Valerie G. Scott

Florida CASE – Legislation and Bylaws Chair

CEES Co-Chair



EXPANDING OPTIONS FOR STUDENTS AND ADULTS WITH DISABILITIES

Senator President Andy Gardiner and House Speaker Steve Crisafulli hope to pass a series of bills early in the 2016 legislative session that would expand educational and economic options for Floridians with disabilities. Senator Gardiner will work towards putting into law an expansion of the “Personal Learning Scholarship Accounts.” Remember this option was created in 2004 for K-12 students with disabilities. The scholarship funds can be used for tuition, instructional materials, contracted services by public schools or school districts or contributions to the Florida Prepaid College Program. The program was expanded through the 2015-16 budget to include all students on the autism spectrum but the expansion exists only in budget not in state law. Report indicates 1,500 scholarships awarded in the first year and 3,000 in the second. The goal is to have the expansion in law in the upcoming session, which starts in January. Senator Gardiner seeks to obtain greater educational and vocational opportunities for people with disabilities and also wants the state to recognize businesses that hire disabled people and to coordinate information on programs and services for students with disabilities and their parents. One of the six (6) disabilities related bills that Senator Gardiner supported in 2015 became law. Stay tuned for additional information throughout the legislative Session.

**2015 FLORIDA COUNCIL FOR EXCEPTIONAL CHILDREN
69TH ANNUAL CONFERENCE**



**“ THE HEART AND SOUL OF SPECIAL
EDUCATION”**

It is with great pleasure that Florida CASE co-sponsored our Florida CEC conference again this year! The conference included over twenty-five (25) break-out sessions that included but not limited to school climate and discipline, family, school and community partnerships, school, district and state administrative and personnel issues, early childhood, curriculum and instruction, transition, technology...all of which addressed supporting our students using research and/or evidence based strategies that will prepare our students for the 21st century.

In addition, FCEC holds an Awards dinner which includes recognizing and awarding CEC subdivisions the President's award for their respective unit. FCEC presents the President's Award annually to recognize CEC units in the state for actions that support the mission and Goals of the Council for Exceptional Children. The areas of focus are as follows:

Collegiality and Networking Activities

Grass Roots Advocacy Activities

Professional Development Activities

Communication Activities

AND THE 2015-16 WINNERS ARE...



Florida CASE President **Dr. Rosalind Hall**

FCEC Chapter 311- Big Bend, Tallahassee **Catie McRae**

FCEC Palm Beach County Chapter 200 President **Kareem Thompson**

FCEC Orange County Chapter 155 President **Lisa Jester**

FCEC Chapter 296 President **Pat Wilson-Lavigne**

FCEC Suncoast Chapter 176 President **Julie V. Bush**

FCEC Subdivision FLCCBD President **Ken Campbell**

PLEASE JOIN CASE FOR OUR SECOND YEAR OF COLLABORATION!



CASE/FASSA/FOIL Collaboration 2016

When

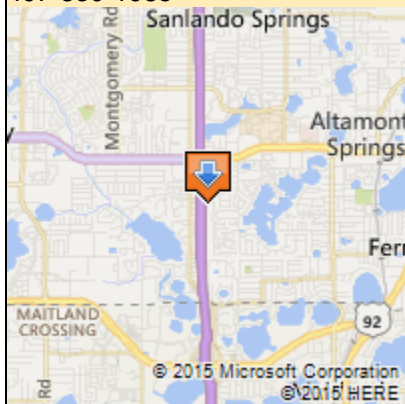
February 25-26, 2016

[Add to Calendar](#)

Where

Hilton Orlando/Altamonte Springs

350 Northlake Boulevard
Altamonte Springs, FL 32701
Altamonte Springs, FL 32701
407-830-1985



[Driving Directions](#)

Please join us for this collaborative event, featuring:

Dr. T.S. Grant, Keynote Speaker

Discussion Topics Include:

DOE Updates
Reinventing Special Education
Best Practices in Inclusive Education (BPIE)

Click on the link below to register

[Register Now!](#)

[I can't make it](#)

If you have any questions about the event or how to register, please contact Dr. Poinsetta Tillman using the contact information below.

Thank you for your attention and response. We look forward to seeing you at the event.

Sincerely,

Dr. Poinsetta Tillman
Professional Development Chair, Florida CASE
poinsetta.tillman@polk-fl.net
863-647-4258



➤ **CASE, FOIL AND FASSA COLLABORATION**

2ND ANNUAL CONFERENCE

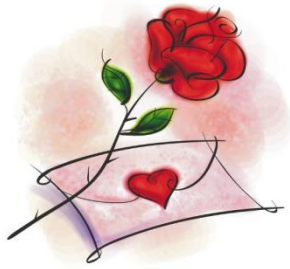
FEBRUARY 25 & 26, 2016, ORLANDO

➤ **CASE 19TH ANNUAL SUMMER LEADERSHIP INSTITUTE**

JUNE 13-15, 2016

HYATT REGENCY COCONUT POINT RESORT AND SPA

BONITA SPRINGS, FL.



QUOTE OF THE MONTH

“Leadership is the capacity to translate vision into reality”

~ Warren G. Bennis

Best Regards,

DR. ROSALIND A. HALL, PRESIDENT FLORIDA CASE AND BOARD OF
DIRECTORS